



RETAIL/RESTAURANT FOR LEASE

BED BATH & BEYOND PLAZA • 10640 NW 19th Street, Miami, FL 33172



PROPERTY OVERVIEW

10640 NW 19th Street
Miami, FL 33172

Bed Bath & Beyond anchored plaza located in Doral, adjacent to Miami International Mall with easy access to SR-836 and the Florida Turnpike.



+/- 10,582 SF (former Pier 1) with flexible sub-division plan

+/- 1,300 SF inline space

Located in the rapidly growing sub-market of Doral surrounded by multiple office parks

Direct frontage on NW 107th Ave (a major north-south corridor in SW Dade County)

Strong Daytime Population with over 165,917 people in the 3 mile radius.

Great signage and branding ability

Join Bed Bath & Beyond, Party City, Petco, T-Mobile, Starbucks, Office Depot, Moe's, Jimmy Johns and more

DEMOGRAPHICS - 3 miles

Population:	154,169
Avg HH Income:	\$74,136
Daytime Population:	165,917
Traffic Counts:	45,500 AADT NW 107th Ave



GALLERY

10640 NW 19th Street
Miami, FL 33172





SITE PLAN

10640 NW 19th Street
Miami, FL 33172



97,456
square feet

493
parking spaces

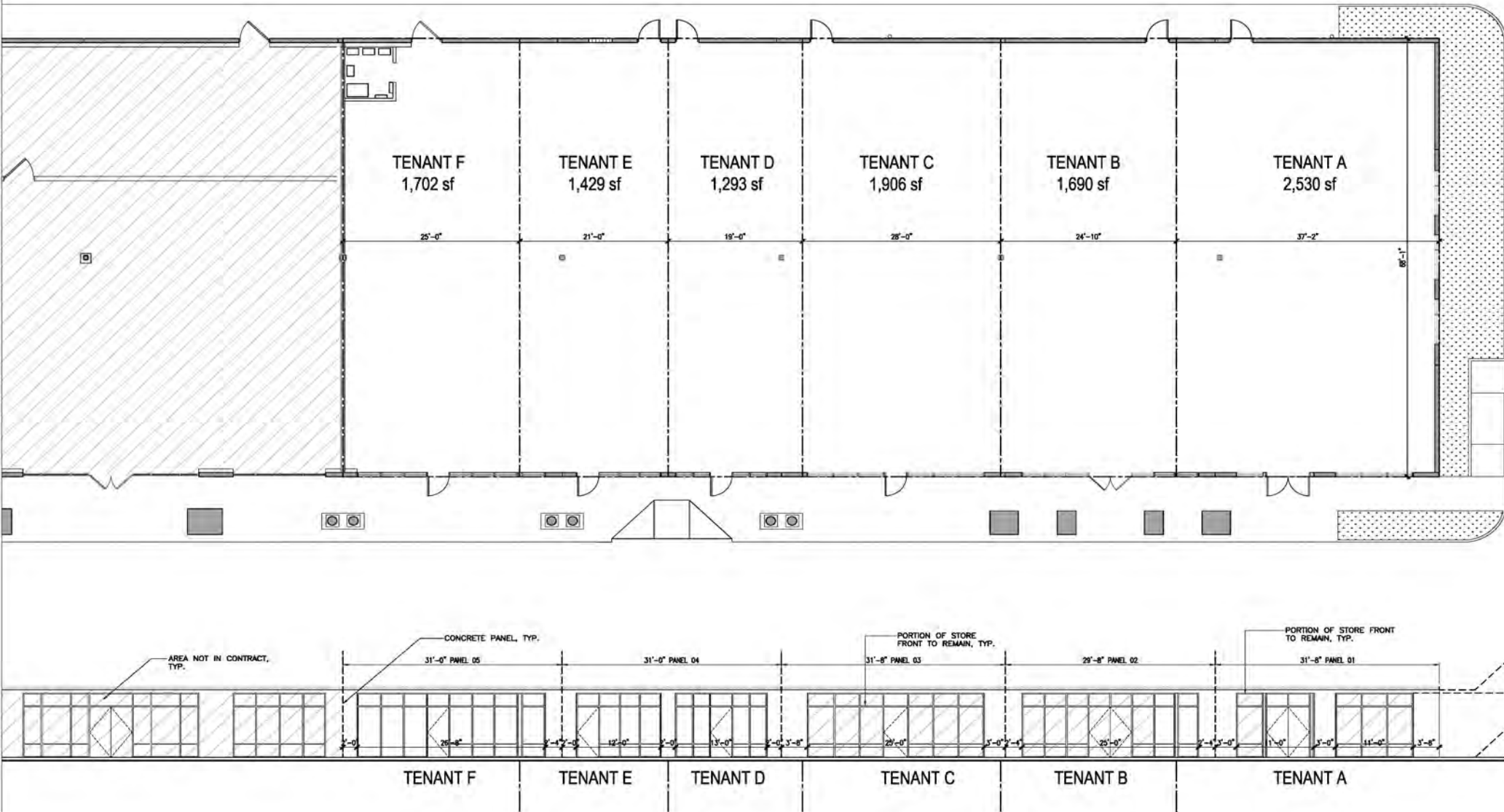
5.1/1000
parking ratio

TENANT	SF
1 Starbucks	1,402
2 Fuddrucker's	6,000
3 Jimmy John's	1,360
4 Young Eye Associates	1,299
5 AVAILABLE	1,301
6 Sally Beauty	1,592
7 T-Mobile	3,622
8 Moe's	2,400
9 Party City	10,930
10 Bed Bath & Beyond	28,053
11 Office Depot	16,175
12 Doral Dental	1,707
13 Petco	11,033
16 AVAILABLE	10,582



FLOOR PLAN

10640 NW 19th Street
Miami, FL 33172

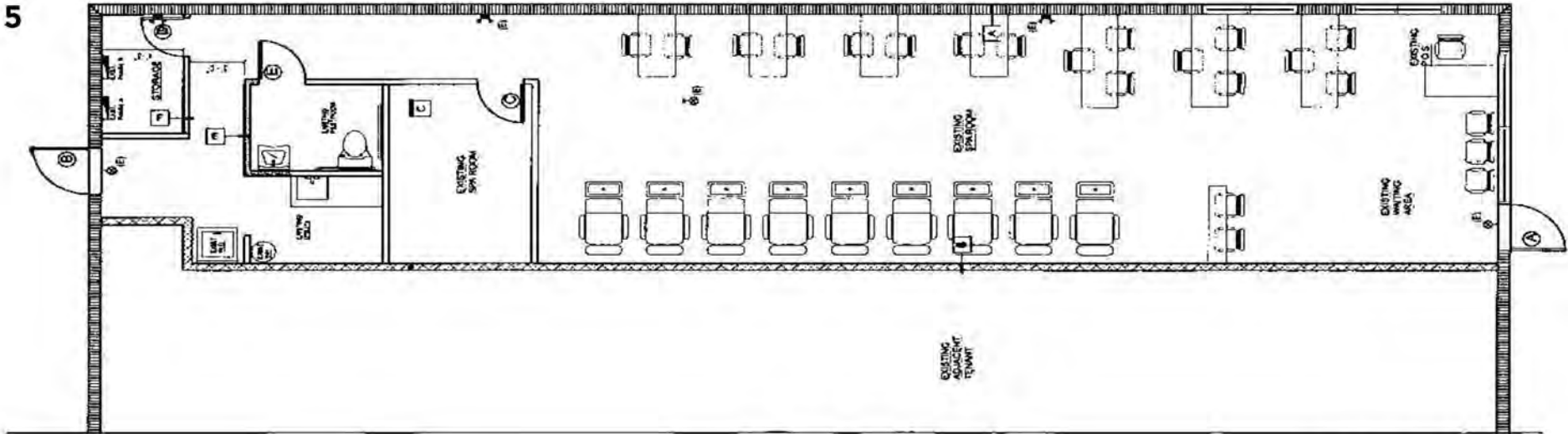




FLOOR PLAN

10640 NW 19th Street
Miami, FL 33172

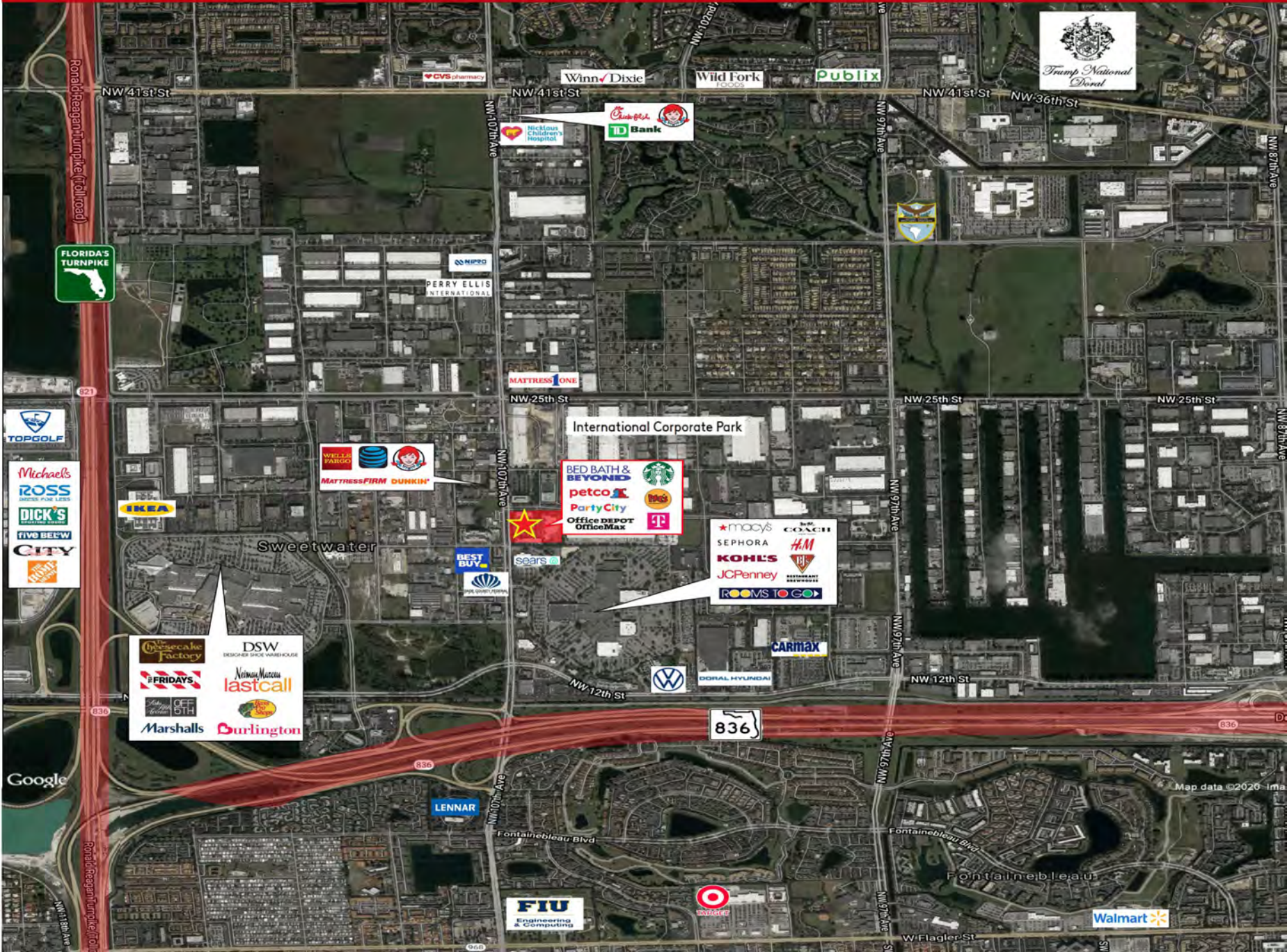
SPACE 5



1 FLOOR PLAN

NEIGHBORHOOD

10640 NW 19th Street
Miami, FL 33172





CONTACT US

10640 NW 19th Street
Miami, FL 33172



Robin Weiner

305-338-8879, cell
305-532-6100, office
robin@ksgrp.com

Michael Finkle

305-532-6100 x245
mickey@ksgrp.com



1665 Washington Avenue, Penthouse, Miami Beach, FL 33139
Phone: 305-532-6100 | Fax: 305-532-6101 | info@ksgrp.com

ksgrp.com